







Features:

- European Minimalist Design
- Cast brass valve
- Ceramic disc valve cartridge
- Adjustable hot limit safety stop
- Pressure Balance cartridge maintains constant output temperature in response to changes in relative hot and cold supply pressures
- Multifunction showerhead with 3 spray functions
- Concealed mounting hardware
- Showerhead Maximum Flow Rate: 2.5 GPM (9.5L/min)

Description	Handle Type	Product Number	Available Finishes	Finish Code
Shower Set	Lever	831/451 	Polished Chrome	100
PB Shower Valve Set	Lever	831/131 	Brushed Nickel	144
			Platinum Nickel	150

Rough & Trim Options	Handle Type	Product Number
Shower Set Trim Only*	Lever	831/486 
PB Shower Valve Set Trim Only **	Lever	831/536 
Showerhead Only		831/082
Rough Only		899/260/191

* Includes Pressure Balance Shower Valve Trim, Showerhead & Shower Arm

**Pressure Balance Shower Valve Trim Only

Extension Kit	Product Number
PB Handle Extension Kit	A3195.191

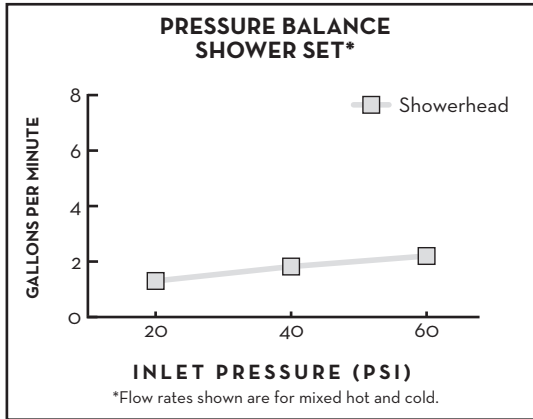
ROUGH-IN DIAGRAM
SHOWN ON REVERSE SIDE




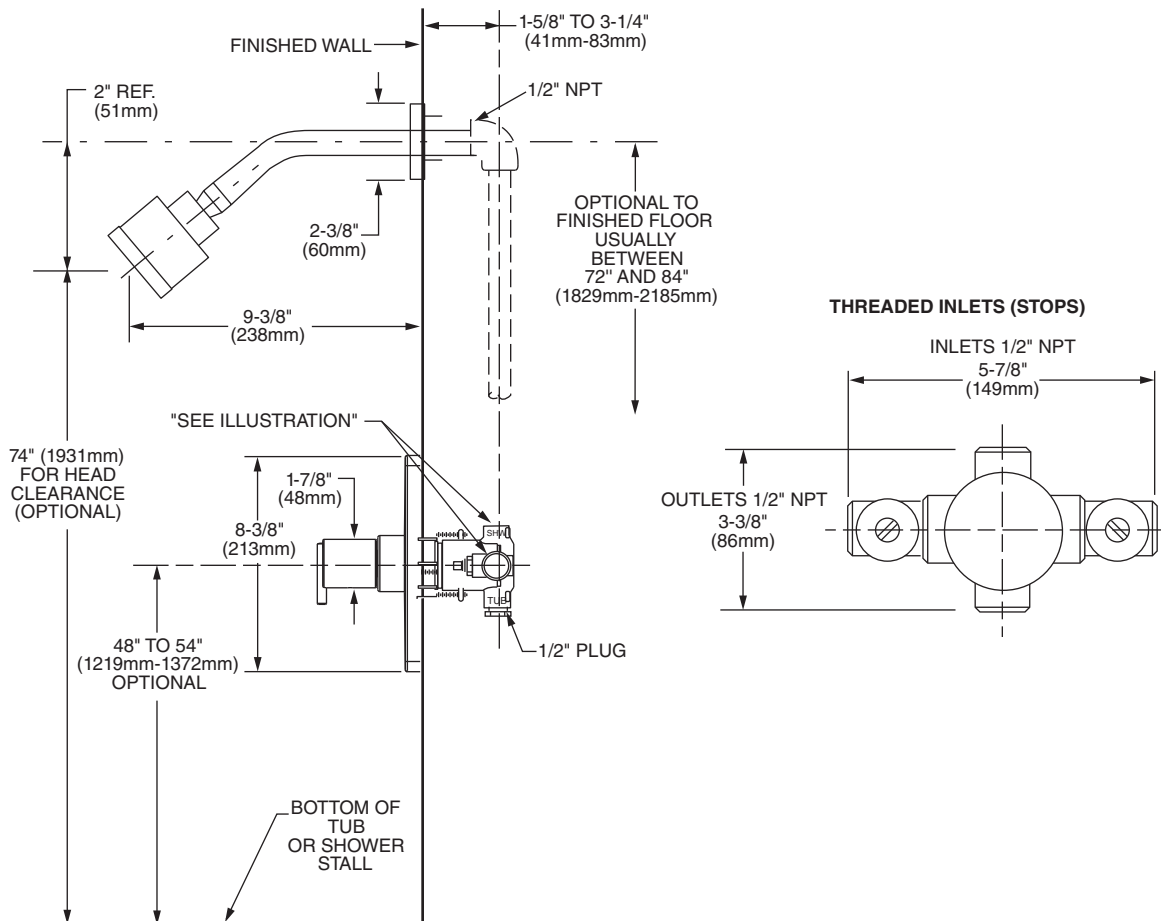
CODES & STANDARDS

These products meet and exceed the following codes and standards:

- ASME A112.18.1
- CSA B125.1
- ASSE 1016



 Meets the American Disabilities Act Guidelines and **ANSI A117.1** Requirements for the physically challenged.



IMPORTANT: These measurements are subject to change or cancellation. No responsibility is assumed for use of superseded or voided pages.