

Features:

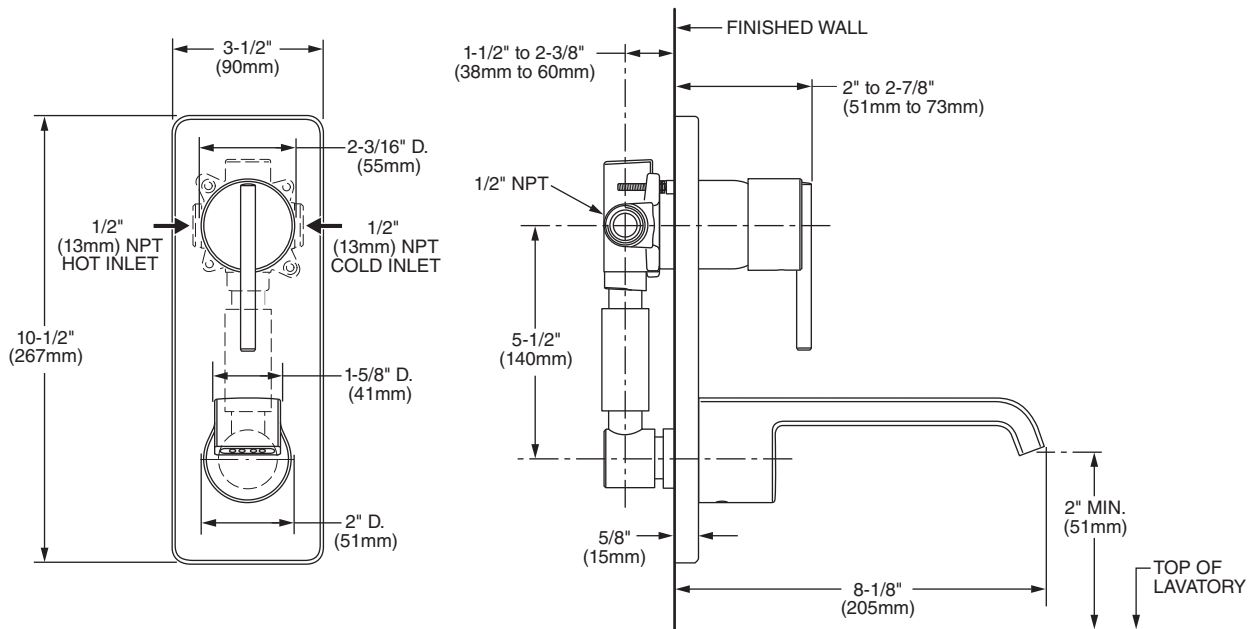
- European Minimalist Design
- Cast brass spout and valve
- Ceramic disc valve cartridge
- Lead Free - Faucet contains ≤ 0.25% total lead content by weighted volume
- Maximum Flow Rate: 1.5 GPM (5.7L/min)

Description	Handle Type	Product Number
Single Lever Wall Mount Faucet (Includes Rough & Trim)	Lever	831/O75

Available Finishes	Finish Code
Polished Chrome	100
Brushed Nickel	144
Platinum Nickel	150

Rough & Trim Options	Handle Type	Product Number
Trim Only	Lever	831/O74
Rough Only		876/OO6/191

Extension Kit	Product Number
Single Lever Wall Mount Lavatory Extension Kit	A960176.191

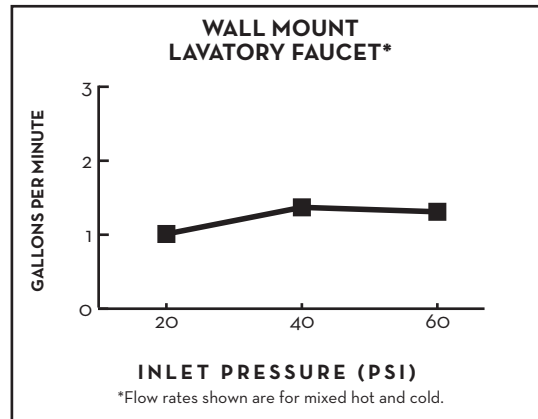


IMPORTANT: These measurements are subject to change or cancellation. No responsibility is assumed for use of superseded or voided pages.

CODES & STANDARDS

These products meet and exceed the following codes and standards:

- ASME A112.18.1
- CSA B125.1
- NSF 61/Section 9
- EPA WaterSense® High Efficiency Lavatory Faucet Specification



Meets the American Disabilities Act Guidelines and **ANSI A117.1** Requirements for the physically challenged.

